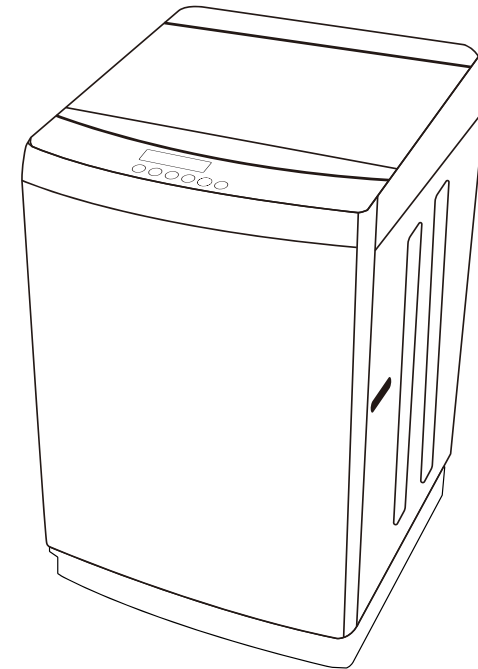


User Manual

Top Load Washing Machine

Model:EAWM-1150



Trouble shooting instruction

When the following problems occur, the microcomputer will test the abnormal status and give buzzing warning sounds for 10 seconds

Note

Press "Start/Pause" button, the failure display will be cleared. Check and fix all the failures, press the "Start/Pause" button again, the machine will resume operation. If the error status continues, please unplug the power plug, and call our service number.

Failure	Reason
Stop working	<ul style="list-style-type: none"> • Ensure it is connected to the power. • Press start/pause button. • Ensure the fuse is in working order and that the power is on. • Ensure the power is on • Check that the wiring has not come loose.
No or little water inlet	<ul style="list-style-type: none"> • Is the tap open? • Has the water supply stopped? • Is the water inlet pipe blocked? • Is the water inlet pipe frozen? • Ensure the water pressure is enough.
No drainage	<ul style="list-style-type: none"> • Ensure the drainage pipe is placed down. • Ensure that the outlet pipe is not placed too high (exceeding 15cm). • Is the drainage outlet blocked?
No spin	<ul style="list-style-type: none"> • Redistribute the washing to even out the weight of the load. • Ensure the machine is placed on a level surface. • Ensure the top cover is closed properly. • Check if the "wash only" program is selected.
Other	<ul style="list-style-type: none"> • Switch off the power, unplug the plug and call our service number

This appliance is intended to be used in household and similar applications such as:

- staff kitchen areas in shops, offices and other working environments;
- farm houses;
- by clients in hotels, motels and other residential type environments;
- bed and breakfast type environments;
- areas for communal use in blocks of flats or in launderettes.

Specification, picture and feature are subject to change without prior notice for purpose of product improvement.

Contents

Warning	the 2nd cover
Specification	the 2nd cover
Name of the parts	1
Safety precautions	2
Installation and adjustment	4
Preparation before washing	9
Loading the laundry	10
Usage of the detergent	10
Control board function introduction	11
General instruction	13
Instruction for program setting	14
Non-failure conditions	14
Packing list	14
Trouble shooting instruction	15

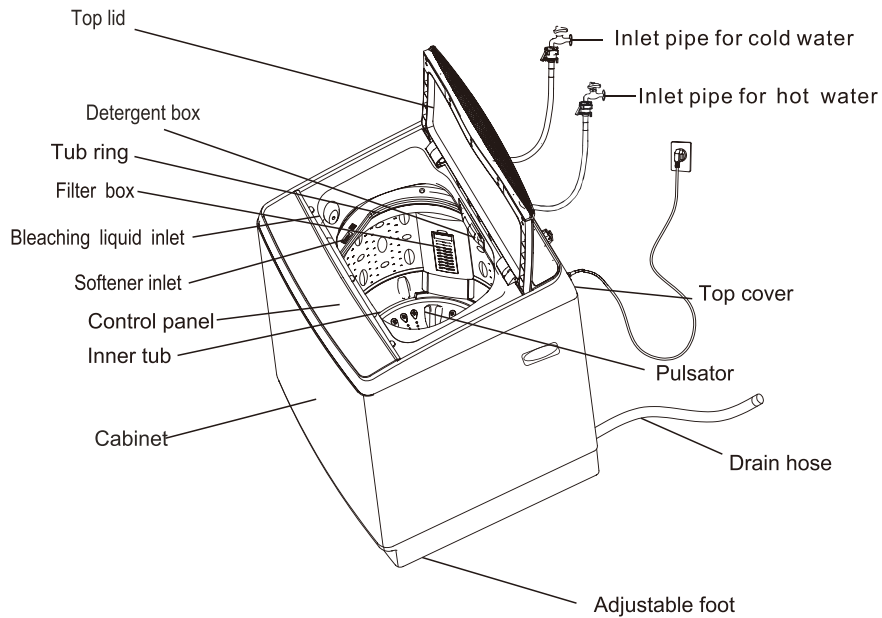
Warning

- Young children should be supervised to ensure that they do not play with the appliance.
- This appliance is not intended for use by persons (including children) with reduced physical sensory or mental capabilities, or lack of experience and knowledge, unless they have been given supervision or instruction concerning use of the appliance by a person responsible for their safety.
- If the supply cord is damaged, it must be replaced by the manufacturer, its service agent or similarly qualified persons in order to avoid a hazard.
- The instruction for appliances connected to the water mains by detachable hose-sets supplied with the appliance are to be used and that old hose-sets should not be reused.

Specification

Model	Rated washing / spinning capacity(kg)	Water level/Water quantity (about/L)	Water inlet pressure (MPa)
EAWM-1150	10.0	1/19 2/25 3/35 4/40 5/48 6/53 7/60 8/69	0.03-0.8

Name of the parts






Instruction for program setting

1. Press "power" button
2. Press "program" button
Select the program you need according to the category of your washings.
3. Press "water level" button, select necessary water level, put in the detergent accordingly.
4. Close the top lid
5. Press "start/pause" button.
 - If you want to change the set program, please shut off the power and switch on again to select the program you want.

Non-failure conditions



1. Sometimes water may flow in when washing or rinsing, which is automatic water compensation when the water level goes down.
2. When the machine starts to spin, the wash/rinse tub may roll or stop from time to time.
3. When injecting water for rinsing, the water may come out of the drainage pipe
4. Sometimes water may come in and rinse during spinning.
5. When spinning is finished, there may be sound of water flow.

Packing list

Name	Quantity
● User's manual	● One
● inlet hose Components of the water 	● One or Two
● Drain hose 	● One
● Bottom plate 	● One

Specification: Subject to change without notice

Meaning and description of the symbols

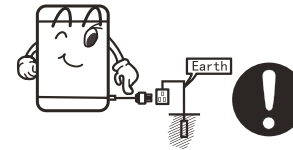
<p>Warning sign</p> 	<p>Contents marked with that symbol are related to the safety of the product and the personal safety of the users. Please operate in strict conformity to the contents, otherwise it may cause damage of the machine or risk the personal safety of the user.</p>
<p>Forbidden sign</p> 	<p>Contents marked with that symbol are actions forbidden to perform. Performing those actions may result in damage of the machine or risk the personal safety of the user.</p>

General instruction

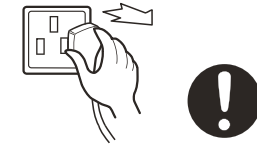
1. Connect and put down the drainage pipe, connect to the inlet pipe, open the tap. Before opening the tap, make sure the screw is fastened; otherwise, water leakage may be caused.
2. Put the plug into socket, put the washings in the machine, press "power" button to connect to power.
3. Press "start/pause" button (As default, the machine shows "normal" program for 1st time use)

Safety precautions

Please insert the plug on special 220-240V Ensure the power supply is a single-phase receptacle. Also ensure that the earthing prong of the power receptacle is earthed correctly. Make use of a leakage protector if possible.



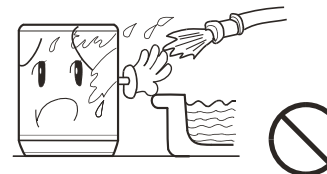
The power cord plug should remain easily accessible to be plugged in or out while the machine runs normally. Unplug the machine and close the water tap when not in use, when moving the machine or when cleaning. Dry hands before handling the power cord plug.



Do not damage the power cord, bend, extend, twist, bind or alter it by force in any manner. Ensure the cord is free from being pinched, compressed or stretched. If the power cord or the power plug is damaged, or the power plug becomes flexible, to avoid the risk of injury or fire, it should be replaced by a qualified technician. Keep the pin of the power plug clean, if the power plug is plug becomes dirty, please wipe it with a dry cloth carefully.



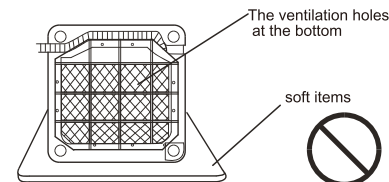
Do not place the machine in a damp place like the bathroom. Never wash it with water. Do not place wet laundry on the control panel.



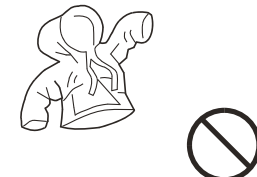
Do not use water hotter than 50°C.



In case the washing machine is installed on flooring with carpets, do not block the ventilation hole with carpet.



Do not wash water-proof laundries like a raincoat, bike covers etc. to avoid abnormal vibrations when spinning.



Do not let the machine share one receptacle with other electric appliances. If the power plug is damaged, or the plug socket connection is loose, do not use the plug any more.

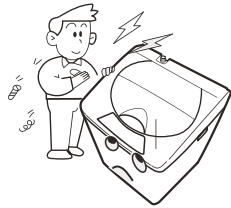


Safety precautions

Do not reach into the machine with your hands whilst it is turning, washing or spinning. It is dangerous even if the rotation is slow. Do not leave children unattended with the machine. Do not allow children to climb up against the washing machine.



Do not dismantle, repair or alter the machine by yourself.



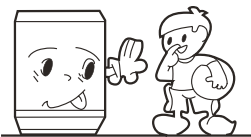
Do not put any hot or heavy items (such as the kettle with hot water) on the washing machine.



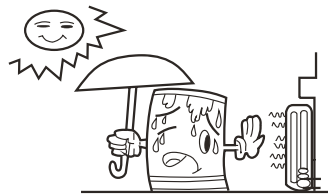
Do not wash laundries with volatile materials (such as thinner, petrol etc.)



The handicapped or children without supervision shall not use the machine.



Keep the machine away from direct sunlight and heat sources like a heater.



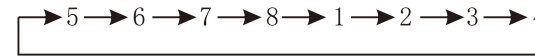
(2) “normal”, “duvet”, “gentle” and “quick” default to the “wash”, “rinse” and “spin”.

(3) “normal”, “duvet” and “gentle” can be adjustable, and “gentle” omits the process of “spin-soak, wash, rinse, spin”.

(4) “process” button is void when “quick” is selected and this process can't be adjusted.

6. “Water level” Button

• Used to set the water level, select under standby state:



(1) The water level for rinse is one level higher than washing as default, when select the 8th water level for washing, the rinse water level is also the 8th water level.

(2) The water level of “Quick” washing program cannot be set; it is the 5th water level as default.

(3) The water level of “gentle” is 4th as default.

(4) The water level of “duvet” is 6th as default.

(5) When select water level 1, 3, 5, 7, the light will flash for long time; Select water level 2, 4, 6, 8, the light will shine. It is the same while running.

7. Child lock Function

After the machine runs, press buttons “process” and “delay” together at the same time for 2 seconds, after the buzzer ringing, the machine will enter child lock state. All the buttons will be locked, including “power” button. The digital tube will display the symbol of “child lock” and remaining time under 2/2 frequency to remind users that the machine is under state of “child lock”. To unlock, press buttons “process” and “delay” at same time for 2 seconds. The digital tube only displays remaining time. when set “Child lock” function, E7 alarm for unlock top cover, machine stop working but not draining. Then close the cover, machine continue working.

8. Failure Alarm

The PCB can recognize 7 kinds of failures to alarming in order to remind users. See details in below table:

No.	Failure Category	Description	Digital Display	Buzzer	Methods	
1	Overtime of water inlet	Surpass 30 minutes when water inlet or compensation	E0	Buzzer for 10 seconds 0.25 seconds ON 0.25 second OFF	Open the top lid then close	
2	Overtime of drain	Surpass 5 minutes when drain	E1			
3	Unbalance of spin	Hit inner drum for 3 times when spin	E2			
4	Unlock of door cover	Disconnect of the safety switch	E3		Turn off power	
5	Abnormal of water level sensor	Loose of the water level sensor	E4			
6	Unlock top cover when set “delay”	When set “delay” function, alarm for unlock top cover	E5			Close the lid
7	Unlock of door cover, when set “Child lock”	When set “Child lock” on alarm for unlock door cover	E7			

Control board function introduction

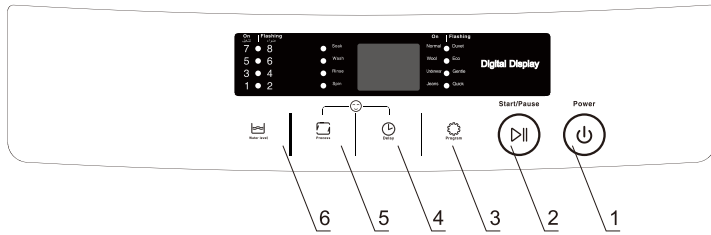


Image shown here is indicative only. Actual product you receive may differ.

1. "Power" Button

- Press this button to connect the power. To cut off the power, press this button again. Press this button and do not press other button within 10 minutes, the power will automatically cut off. After the washing programs finished, the power will be automatically cut off after six times of buzzer sound.

2. "Start"/ "Pause" Button

- Connect to the power and press "power" button, then press this button, the washing machine starts to run. This button can be used to temporarily stop running. To start running again, just press this button.

3. "Program" Button

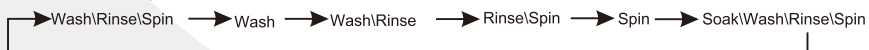
- This button is used for "program" selection, and different programs can be chosen as per below sequence from standby mode.
Normal-Duvet-Wool-Eco-Underwear-Gentle-Jeans-Quick
Remind: (1) When you choose "Soak" process, it will skip programs of "Quick", "Gentle", and "Wool"
(2) After power on, if you press on "Program" button, and press "Power" button, then hold on "Program" button for 5 secs, the machine can enter into "Energy test" program; Half load at water level 4, and full load at water level 8.
(3) The display rules of energy program as follow: A(indicates 10) b(indicates 11), C(indicates 12), d(indicates 13), E(indicates 14), F(indicates 15), H(indicates 16), h(indicates 17), c(indicates 18)
(4) The light will be on if you choose program of "Normal", "Wool", "Underwear", "Jeans"; The light will be flashing if you choose program of "Duvet", "Eco", "Gentle", "Quick"; The light will be display like this also during machine running.

4. "Delay" Button

- When set delay function, this button can be set for time. Press "delay" button, the washing machine enter delay state. The initial delay time is 2 hours; every single press of this button will increase one hour, till 24 hours. When "Delay" function starts, the digital light will flashes every 0.5 seconds. When the washing program starts, the light stops flashing and will display washing time, meanwhile all the other buttons will be locked(except "delay" and "power" button). At this time, when press "delay" button, it will display the program procedure and data for 3 seconds. Then it continues to display "delay" time. After "delay" function starts, if want to change "delay" time, must press the "power" button to turn off the machine then press "power" again to restart.

5. "Process" button

- (1)When press "process" button under the program already set, the cycle program will run as: wash, rinse, spin-wash-wash, rinse-rinse, spin-soak, wash, rinse, spin.

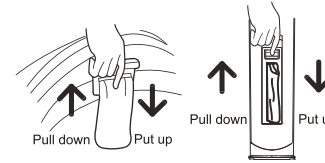


Installation and adjustment

Please install and adjust the machine according to the requirement of the manual. It is very important to your safety and for operating the machine correctly.

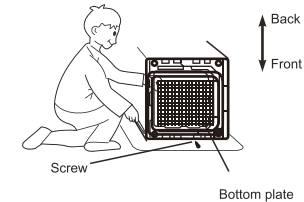
Install the lint filter

- 1.Press down ward to assemble.
- 2.Pull up ward to detach.



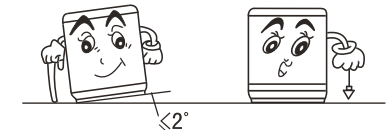
Install the bottom plate

After you have opened the package, please lie the washing machine down gently on a soft cloth (like a towel or a blanket) . Install the bottom plate to the bottom of the machine with the screw provided and a screwdriver, then lift the machine upright again. See image as reference:

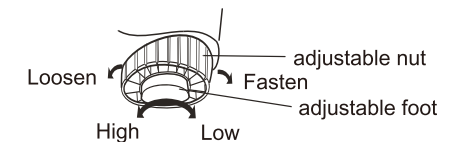


Adjust the installation position

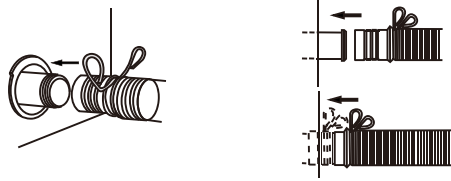
The largest allowed slope of the shank base of the machine is 2°. The slanting or rough ground will result in unstable running or stoppage of the machine. Please adjust it with following methods:



- Adjust the adjustable foot:
 - 1.To twist the adjustable foot, please first lift up the side of the foot slightly, loosen the adjustable nut, and twist the foot.
 - 2.Fasten the nut after adjustment.



Installation of drain hose

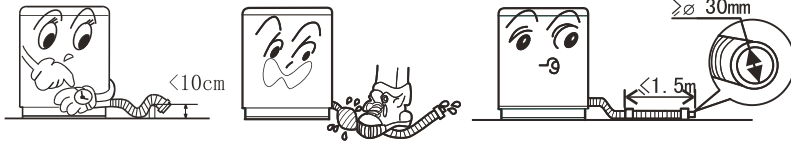


- Completely sleeve the drain hose over the sewer.
- Fix and tighten it with a hoop. (As shown in the figure)

Usage of the drain hose

The drain hose shall drain smoothly

1. The height of the drain hose shall be less than 10cm, or the drainage will not run smoothly. Prolonged drainage might cause the machine to stop midway.
2. Do not trample on or pinch the drain hose.
3. If the drain hose is too long, cut it at mid point. To ensure smooth drainage, cut the front end of the hose slantingly.
4. To extend the hose, purchase one separately adhering to the following: The inner diameter of the extra hose shall not be less than 30mm, and the length shall not be exceeded 1.5m.
5. If the extra hose is too long, cut it either at A or at point B.



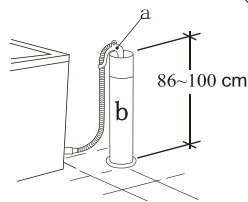
3. If the drain hose is too long, cut it at mid point. To ensure smooth drainage, cut the front end of the hose slantingly.
5. If the extra hose is too long, cut it either at A or at point B.



FOR LOWER DRAIN SYSTEM ONLY

Placement of upper water drain hose

- The height of drain hose ("a") should be between 86-100 cm.
- Diameter of "b" should not be less than 3 cm, and flow capacity not less than 40 L/Min.
- Before the washing machine starts, the user should hang the drain pipe up to a height of 86-100cm from the floor.



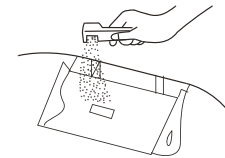
FOR UPPER DRAIN SYSTEM ONLY

Loading the laundry



- Refer to the total weight of all the items in a single load under dry conditions to determine if it is within the machine's washing and rinsing capacity. The actual weight of the load should be less than the recommended capacity.
- The thickness, size and type of cloth will influence the actual washing capacity. It is recommended to only load enough laundry ensuring that the items can still move freely when being washed.
- Do not select "High" water level for laundry less than 1.0kg, so as to avoid splashing of water.
- To wash thin laundry like stockings, silk etc., please first put them into a washing mesh bag (which can be purchased separately) before wash.

Usage of the detergent



Inlet box of the detergent

How to use the washing powder

- Directly dissolved in the machine
 1. Fill water to "Low" water level.
 2. Add the powder. Run for 30 seconds to dissolve it completely.
 3. Insert the laundry and select the suitable water level.
- The instant dissolving of the washing powder:
 1. Prepare warm water of 30°C in a container.
 2. Add the powder while stirring to fully dissolve it.
- Add the correct amount of detergent according to the water level and laundry quantities.
- It is suggested not to use high sudsing detergent.
- Washing powder of poor quality or in storage for a long time may be caked. Please pay attention to cleaning the detergent box often.

How to use the whitener

- Fill water to desired level. Dilute the whitener in a container. Pour it slowly into the washing tub.
- Avoid using whitener on laundry with color or pattern as they are prone to lose color.
- The whitener shall not touch the laundry directly.
- Refer to the manufacturer's instructions for the usage and quantity of the whitener.
- For powder whitener, please dissolve it before use.

Preparation before washing



Preparation before washing

1. Connect the water inlet hose and open the water tap .
2. Confirm that the washing machine is earthed correctly. Then insert the power plug into the receptacle. Do not connect the earth terminal to the gas or tap water pipe.
3. Place the drain hose in position.

Pay attention to the following before washing the laundry

<p>Confirm if there's special instructions for the laundry.</p>	<p>Empty the pockets. Remove all foreign items like coins, sand, hairpins etc.</p>	<p>Fasten the buttons and zippers.</p>	<p>The quantity of the laundry shall not exceed the recommended amount. Large items like jeans should be washed separately.</p>	<p>When the pulsator is running, the buttons of the laundry may cause noise. For the sake of discretion, place the items turned inside out into the tub.</p>
<p>a. Please check if the laundry are suitable for washing. b. Separate those not colorfast from the other laundry c. Hand wash water resistant laundry separately. d. Pre-treat heavily soiled laundry by adding detergent to the soiled areas before washing it in a normal washing load cycle. e. Turn items with long fibers or material likely to get lint inside out before washing. f. Do not put laundry polluted with chemicals directly into the washing machine. g. Place small laundry items, likely to be twisted or worn, and woolen laundry, into a mesh bag before washing.</p>				

Install the water inlet hose

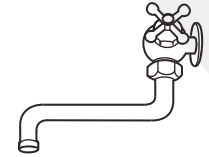
Confirm the water tap
Water tap, suitable



Outlet end surface

>10mm

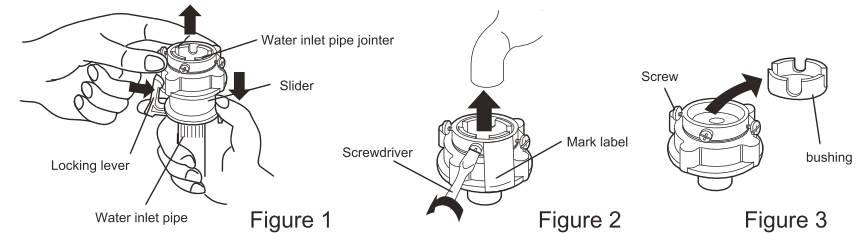
Water tap, not suitable



It is required that the front end shall not be longer than 10mm. The outlet end surface of the tap shall be flat and smooth. If not please file it to avoid leakage.

Connection between the water inlet hose jointer and the water tap

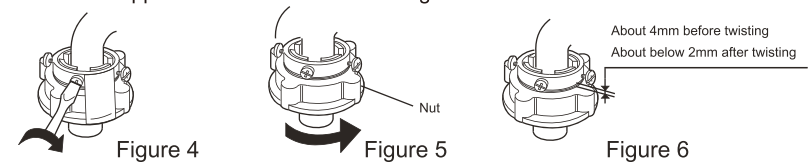
1. Use the new water inlet hose provided with the machine to connect to the water faucet. Old hose sets should not be reused.
2. Press the lower end of the lock lever and push down the slider. Lift the water inlet hose jointer from the water inlet hose component. See Figure 1.
3. Loosen the screw till the water tap can be accessed. Put the jointer of the water inlet hose on the tap. See Figure 2. (If the tap diameter is too large and the jointer can not be set on the water tap, please loosen the four screws and take out the bushing in the jointer. See the figure3.)



4. Fasten the four screws evenly. See Figure 4.

5. Remove the nameplate. Twist the fastening nut as per the indication of the figure. See Figure 5.

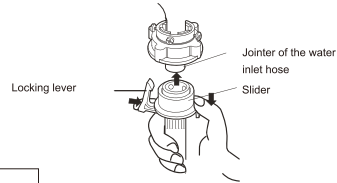
Remarks: Before twisting the fastening nut, the thread is 4mm above the upper surface of the nut. After twisting the fastening nut, the thread is 2mm above the upper surface of the nut. See Figure 6.



For Water Inlet Pipe Jointer

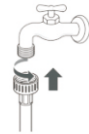
Connection between the jointer or water tap and the water inlet hose

1. Push down the slider. Insert the water inlet hose into the jointer.
2. Hang the lock lever to the jointer. Release the slider till a click sound is heard.



For Water Inlet Pipe Jointer

- Connect the water supply hoses to the water faucets tightly by hand and then tighten another 2/3 turn with pliers.-Connect the blue hose to water faucet.



▲ WARNING
• Do not overtighten. Damage to the coupling can result.

For Double Thread Inlet Pipe

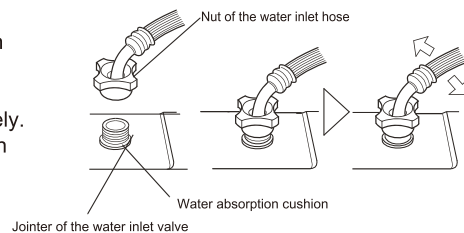
- Connect the inlet hose adapter to the water inlet of a washer and turn it to be fixed.



*Check the packing in the inlet

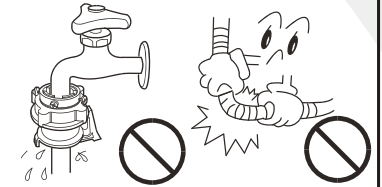
Connection between the water inlet hose and the washing machine

1. Do not remove the water absorption cushion. Please check if the cushion is dropped or damaged before each usage. If it happens please contact our after-sale department immediately.
2. Put the nut of the water inlet hose on the valve jointer.
3. Fasten the nut. Swaying it gently to confirm if it's suitable.



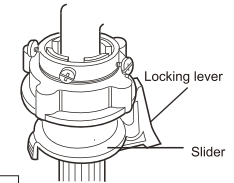
Check the connection between the jointer of the water inlet hose and the water tap

1. Swaying the hose gently to confirm if it is fastened securely.
2. After installation, open the tap to check if it leaks.
3. Do not bend the hose by overstraining it.
4. Before each usage please check if the connection between the jointer of the water inlet hose and the water tap, and the installation of the water inlet hose are firm, so as to prevent dripping from improper installation position.



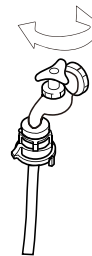
Take down the water inlet hose

1. Close the water tap.
2. Press the locking lever. Push the slider down. Then remove the water inlet hose. If the machine is used more than once every week, the jointer of the water inlet hose can be kept on the tap to prevent damaging the fixing screw.



For Water Inlet Pipe Jointer

1. Close the water tap.
2. Screw out the water inlet hose, and preserve it well.



For Double Thread Inlet Pipe